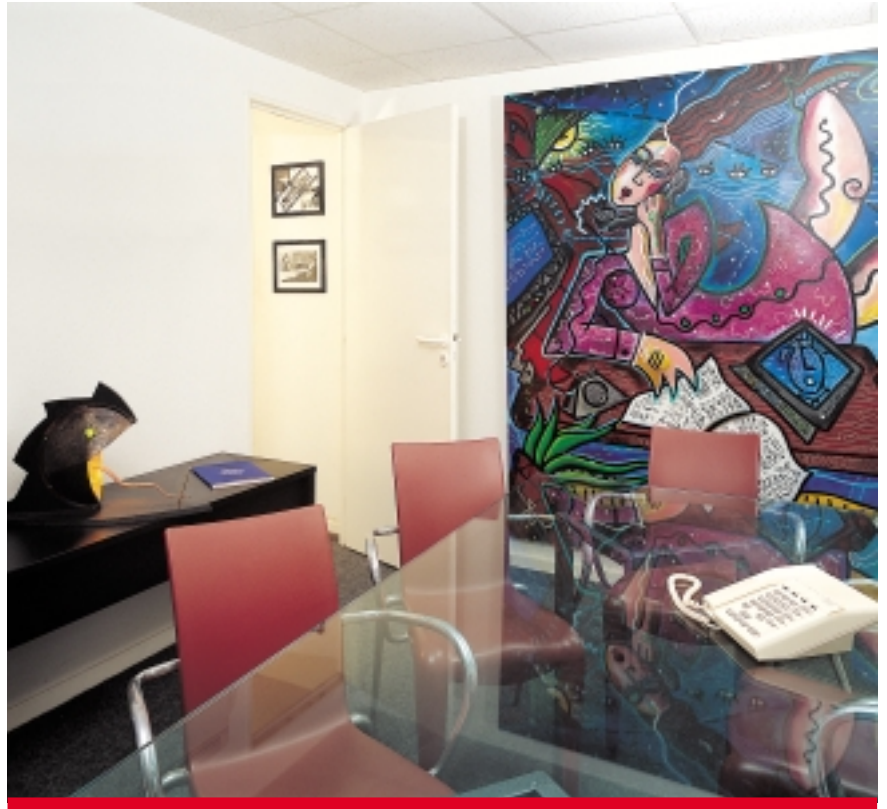




AQUASTYLUS

Water Coil

*Chilled Water Fan Coil
Convertible Type
400-2,000 CFM
CFEA Series 50/60 Hz*





AQUASTYLUS™ - Simply The Best Value!



Trane's new Aquastylus Chilled Water Fan Coils move you to new heights of cooling or cooling/heating comfort, with luxurious design, state of the art technology and long life durability. Aquastylus Water Coil with optional wired control or LCD wireless remote control, is easily to use and allows precise room temperature control.

With advanced manufacturing techniques, Trane's new Aquastylus Chilled Water Fan Coil is the perfect product for your new lifestyle.

Comfort and Reliability

- Full Capacity and Energy Savings.
- Washable Filter.
- Low Maintenance.
- Attractive Style.
- Effective Air Discharge.
- **3 Minute Anti-Recycle Timer** helps to preserve the life of system components.
- **Optional Electric Heater** offers a better selection of the right unit to meet your needs.
- **Power Failure Recovery** saves settings during a power failure and restarts the system automatically when power resumes.

Flexibility

- Aquastylus' convertible design allows for flexibility in installation. Aquastylus may be installed under the ceiling, low on the wall, or on the floor, depending on the space available in your room.



Convenience

One Touch Control Switch operates the system without the handheld remote control.

Performance Data CFEA04-20

Unit Size	EWT Degree	Water Temperature						
		6				8		
		TC	SC	GPM	PD	TC	SC	GPM
04	40	16.5	10.7	5.5	24.4	15.5	10.3	3.9
	45	13.3	9.3	4.4	16.4	12.2	8.8	3.1
	50	9.8	7.8	3.3	9.5	8.7	7.4	2.2
06	40	24.6	15.7	8.2	24.2	23.4	15.1	5.8
	45	20.0	13.6	6.7	16.6	18.7	13.0	4.7
	50	15.1	11.4	5.0	9.9	13.7	10.9	3.4
08	40	34.7	21.9	11.5	35.4	33.4	21.2	8.3
	45	28.6	18.8	9.5	24.7	27.1	18.2	6.8
	50	21.8	15.9	7.3	15.2	20.3	15.3	5.1
10	40	41.3	26.3	13.7	20.6	39.5	25.2	9.9
	45	33.8	22.5	11.3	14.3	31.8	21.6	7.9
	50	25.7	19.4	8.6	8.7	23.5	18.1	5.9
12	40	47.7	29.7	15.8	26.4	46.2	28.9	11.5
	45	39.5	25.7	13.1	18.7	37.7	24.9	9.4
	50	30.6	21.7	10.2	11.8	28.6	20.9	7.1
14	40	60.9	39.3	20.2	57.4	57.9	37.9	14.4
	45	49.4	34.1	16.4	39.1	46.1	32.6	11.5
	50	37.1	28.9	12.4	23.3	34.1	27.7	8.5
16	40	70.9	45.6	23.6	68.5	67.3	43.9	16.8
	45	57.5	39.5	19.1	46.7	53.8	37.9	13.4
	50	43.6	33.6	14.5	28.2	40.1	32.3	10.0
20	40	78.6	50.0	26.1	38.6	75.3	48.4	18.8
	45	64.4	43.0	21.4	26.5	60.7	41.4	15.2
	50	49.1	36.4	16.3	16.2	45.5	34.9	11.4

- Notes:**
1. Air Entering Coil Conditions are 80/67 in FDB/FWB
 2. Cooling capacities are rated at nominal CFM (Hi Fan Speed)
 3. EWT = Entering Water Temp (F)





With your choice of an easy-to-use wireless remote control, or an optional wired control, Aquastylus offers convenience and flexibility to best suit your needs.

LCD Wireless Remote Control



Quality

All major components are individually inspected and tested, and every unit undergoes a run-test, prior to shipment from the factory.



Wired Control

Temperature Rise (F)									
10					12				
PD	TC	SC	GPM	PD	TC	SC	GPM	PD	
13.2	14.5	9.8	2.9	7.9	13.3	9.3	2.2	5.0	
8.6	11.0	8.3	2.2	4.8	9.8	7.8	1.6	2.9	
4.7	7.7	7.0	1.5	2.6	6.7	6.6	1.1	1.5	
13.3	22.1	14.5	4.4	8.1	20.5	13.8	3.4	5.2	
8.8	17.2	12.3	3.4	5.2	15.6	11.6	2.6	3.2	
5.1	12.3	10.4	2.5	2.9	10.9	9.8	1.8	1.7	
20.0	32.0	20.5	6.4	12.5	30.4	19.7	5.0	8.3	
13.6	25.5	17.5	5.1	8.3	23.6	16.6	3.9	5.3	
8.1	18.6	14.6	3.7	4.7	16.7	13.8	2.8	2.9	
11.5	37.5	24.2	7.5	7.1	35.0	23.0	5.8	4.6	
7.8	29.4	20.5	5.9	4.6	26.5	19.3	4.4	2.8	
4.5	21.0	17.1	4.2	2.5	18.1	15.9	3.0	1.4	
15.1	44.4	28.0	8.9	9.5	42.2	27.0	7.0	6.3	
10.4	35.7	23.9	7.1	6.4	33.1	22.8	5.5	4.1	
6.3	26.2	19.9	5.2	3.7	23.4	18.7	3.9	2.2	
31.6	54.6	36.4	10.9	19.2	51.1	34.8	8.5	12.4	
20.8	42.7	31.2	8.5	12.3	39.3	29.8	6.5	7.7	
12.1	31.2	26.6	6.2	7.0	28.2	25.5	4.7	4.3	
37.6	63.5	42.2	12.7	22.9	59.7	40.4	9.9	14.9	
25.0	50.0	36.3	10.0	14.8	46.3	34.7	7.7	9.4	
14.7	36.9	31.0	7.4	8.6	33.6	29.8	5.6	5.3	
21.4	71.7	46.4	14.3	13.3	67.7	44.5	11.3	8.7	
14.4	56.9	39.7	11.4	8.7	52.5	37.8	8.7	5.5	
8.6	41.6	33.4	8.3	4.7	37.3	31.7	6.2	3.0	

TC = Total Capacity, MBh
 SC = Sensible Capacity, MBh
 GPM = Water Flow, Gallon per Minute
 PD = Water Pressure Drop, ft of water

- Provides maximum convenience.
 - **Fan Speed:** allows for automatic control of four fan settings: High, Medium, Low or Automatic.
 - **Mode of Operation:** allows for selection of the operating mode: Fan, Cool, Dry, Heat or Auto.
 - **Temperature Setting:** between 18°C-30°C.
 - **24-Hour Programmable Timer:** allows you to preset the times for system operation, up to 24-hours in advance.
 - **Louver and Sweep Mode:** allows for control of the air flow direction and improved air circulation (sweep is available on the 12,000 to 24,000 btu models only).
 - **Sleep Mode:** automatic temperature adjustment for more comfortable sleeping conditions and energy savings.
 - **Dry Mode:** controls humidity and maintains a constant temperature, while saving energy.
- Ensures that the control will not be lost.
 - Provides precise temperature control with a system indicator that lights up when the system is operating and...no batteries required!
 - **Fan Speed:** allows for selection of one of three fan speeds: High, Medium or Low.
 - **Mode of Operation:** allows for selection of the operating mode: Fan, Cool or Heat.
 - **Temperature Setting:** between 16°C - 30°C.

GENERAL DATA 50 Hz Product Specifications

INDOOR UNITS								
Model	CFEA04CO CFEA04CE(*)	CFEA06CO CFEA06CF(*)	CFEA08CO CFEA08CB(*)	CFEA10CO CFEA10CH(*)	CFEA12CO CFEA12CJ(*)	CFEA14CO CFEA14CJ(*)	CFEA16CO CFEA16CK(*)	CFEA20CO CFEA20CL(*)
POWER CONN-V/Ph/Hz	220-240/1/50	220-240/1/50	220-240/1/50	220-240/1/50	220-240/1/50	220-240/1/50	220-240/1/50	220-240/1/50
FUSE SIZE MAX (amps)	LOCAL CODE	LOCAL CODE	LOCAL CODE	LOCAL CODE	LOCAL CODE	LOCAL CODE	LOCAL CODE	LOCAL CODE
INDOOR COIL-Type	Slit Fin	Slit Fin	Slit Fin	Slit Fin	Slit Fin	Slit Fin	Slit Fin	Slit Fin
No. Rows	2	3	4	4	4	3	3	4
Fins per in (25.4mm)	14	16	16	14	18	16	15	17
Coil Face Area (Sq.ft)	2.10	2.10	2.80	3.45	3.45	4.13	4.82	4.82
Coil Tube Size (in)	0.38	0.38	0.38	0.38	0.38	3/8	3/8	3/8
Water Flow Rate (gpm)	2.4	3.6	4.8	6.0	7.2	8.4	9.6	12.0
Control Valve	Yes**	Yes**	Yes**	Yes**	Yes**	-	-	-
Drain Connection (in)	3/4	3/4	3/4	3/4	3/4	3/4	3/4	3/4
INDOOR FAN-Type	Forward Curved Centrifugal							
Dia/Width (in)	6x7	6x7	6x8	6x7	6x7	6x9	6x9	6x9
Qty Used	2	2	2	4	4	4	4	4
Fan Drive-No. Speeds	Direct-3	Direct-3	Direct-3	Direct-3	Direct-3	Direct-3	Direct-3	Direct-3
Air Flow (Hi/Med/Lo)								
CFM @ 0.0 in. wg	425/360/300	425/360/300	600/475/375	850/750/650	850/750/650	1,200/1,050/950	1,350/1,100/975	1,350/1,100/975
No Motors (HP)	1(1/20)	1(1/20)	1(1/10)	2(1/20)	2(1/20)	2(1/10)	2(1/10)	2(1/10)
Motor Speed (RPM)	1,075	1,200	1,215	1,300	1,300	1,450	1,450	1,450
V/Ph/Hz	220/1/50	220/1/50	220/1/50	220/1/50	220/1/50	220/1/50	220/1/50	220/1/50
R.L.Amps	0.36	0.42	0.56	2x0.54	2x0.54	2x0.69	2x0.69	2x0.69
L.R.Amps	0.48	0.59	0.67	2x0.89	2x0.89	2x2.28	2x2.28	2x2.28
Electric Heater Data(*)								
Heater Rating (KW)	2.0	2.5	3.5	4.0 (2 elements)	5.0 (2 elements)	5 (2 elements)	6 (2 elements)	7 (2 elements)
Heater R.L.Amps	9.1	11.4	15.9	18.2	22.7	22.7	27.2	31.8
MCA	11.83	14.78	20.58	24.10	29.73	30.1	35.73	41.48
FILTERS-Furnished	Yes	Yes	Yes	Yes	Yes	Yes	Yes	Yes
Total Quantity	3	3	3	4	4	10	12	12
Quantity per Size (HxWxD)(mm)	1-203x250x5 2-203x357x5	1-203x250x5 2-203x357x5	1-203x500x5 2-203x357x5	2-203x376x5 2-203x357x5	2-203x376x5 2-203x357x5	2-203x357x5 2-203x500x5 6-160x210x5	2-203x357x5 2-203x500x5 7-160x210x5	2-203x357x5 2-203x500x5 1-203x250x5 7-160x210x5
DIMENSIONS (HxWxD)								
Crated (shipping)(mm)	687x1,136x279	687x1,136x279	687x1,386x304	687x1,636x304	687x1,636x304	694x1,886x319	694x2,136x319	694x2,136x319
Uncrated (mm)	627x1,085x243	627x1,085x268	627x1,335x268	627x1,585x268	627x1,585x268	627x1,835x268	627x2,085x268	627x2,085x268
WEIGHT (kg)								
Shipping (crated)								
Without Electric Heater	39	40	50	66	66	79	87	92
With Electric Heater	40	41	51	68	68	81	89	95
Net (uncrated)								
Without Electric Heater	36	37	45	61	61	72	79	84
With Electric Heater	37	38	46	63	63	74	81	87

(*) Models with electric heaters have an alphabetic letter in the eight digit,i,e,F,B,H,J,K and L.

MCA-Minimum Circuit Ampacity; calculated as follows:125 % of heater R.L.Amps plus the fan motor R.L.Amps.

(**) The control valve is optional for vertical installation only.

GENERAL DATA 60 Hz Product Specifications

INDOOR UNITS								
Model	CFEA04CO CFEA04CE(*)	CFEA06CO CFEA06CF(*)	CFEA08CO CFEA08CB(*)	CFEA10CO CFEA10CH(*)	CFEA12CO CFEA12CJ(*)	CFEA14CO CFEA14CJ(*)	CFEA16CO CFEA16CK(*)	CFEA20CO CFEA20CL(*)
POWER CONN-V/Ph/Hz	220-240/1/60	220-240/1/60	220-240/1/60	220-240/1/60	220-240/1/60	220-240/1/60	220-240/1/60	220-240/1/60
FUSE SIZE MAX (amps)	LOCAL CODE	LOCAL CODE	LOCAL CODE	LOCAL CODE	LOCAL CODE	LOCAL CODE	LOCAL CODE	LOCAL CODE
INDOOR COIL-Type	Slit Fin	Slit Fin	Slit Fin	Slit Fin	Slit Fin	Slit Fin	Slit Fin	Slit Fin
No. Rows	2	3	4	4	4	3	3	4
Fins per in (25.4mm)	14	16	16	14	18	16	15	17
Coil Face Area (Sq.ft)	2.10	2.10	2.80	3.45	3.45	4.13	4.82	4.82
Coil Tube Size (in)	0.38	0.38	0.38	0.38	0.38	3/8	3/8	3/8
Water Flow Rate (gpm)	2.4	3.6	4.8	6.0	7.2	8.4	9.6	12.0
Control Valve	Yes**	Yes**	Yes**	Yes**	Yes**	-	-	-
Drain Connection (in)	3/4	3/4	3/4	3/4	3/4	3/4	3/4	3/4
INDOOR FAN-Type	Forward Curved Centrifugal							
Dia/Width (in)	6x7	6x7	6x8	6x7	6x7	6x9	6x9	6x9
Qty Used	2	2	2	4	4	4	4	4
Fan Drive-No. Speeds	Direct-3	Direct-3	Direct-3	Direct-3	Direct-3	Direct-3	Direct-3	Direct-3
Air Flow (Hi/Med/Lo)								
CFM @ 0.0 in. wg	425/360/300	425/360/300	600/475/375	850/750/650	850/750/650	1,200/1,050/950	1,350/1,100/975	1,350/1,100/975
No Motors (HP)	1(1/20)	1(1/15)	1(1/10)	2(1/15)	2(1/15)	2(1/10)	2(1/10)	2(1/10)
Motor Speed (RPM)	1,080	1,150	1,200	1,350	1,350	1,450	1,450	1,450
V/Ph/Hz	220/1/60	220/1/60	220/1/60	220/1/60	220/1/60	220/1/60	220/1/60	220/1/60
R.L.Amps	0.48	0.53	0.67	2x0.65	2x0.65	2x0.73	2x0.73	2x0.73
L.R.Amps	0.53	0.59	0.68	2x0.85	2x0.85	2x1.15	2x1.15	2x1.15
Electric Heater Data(*)								
Heater Rating (KW)	2.0	2.5	3.5	4.0 (2 elements)	5.0 (2 elements)	5 (2 elements)	6 (2 elements)	7 (2 elements)
Heater R.L.Amps	9.1	11.4	15.9	18.2	22.7	22.7	27.2	31.8
MCA	11.98	14.91	20.71	24.38	30.00	30.2	35.73	41.48
FILTERS-Furnished	Yes	Yes	Yes	Yes	Yes	Yes	Yes	Yes
Total Quantity	3	3	3	4	4	10	12	12
Quantity per Size (HxWxD)(mm)	1-203x250x5 2-203x357x5	1-203x250x5 2-203x357x5	1-203x500x5 2-203x357x5	2-203x376x5 2-203x357x5	2-203x376x5 2-203x357x5	2-203x357x5 2-203x500x5 6-160x210x5	2-203x357x5 2-203x500x5 7-160x210x5	2-203x357x5 2-203x500x5 1-203x250x5 7-160x210x5
DIMENSIONS (HxWxD)								
Crated (shipping)(mm)	687x1,136x279	687x1,136x279	687x1,386x304	687x1,636x304	687x1,636x304	694x1,886x319	694x2,136x319	694x2,136x319
Uncrated (mm)	627x1,085x243	627x1,085x268	627x1,335x268	627x1,585x268	627x1,585x268	627x1,835x268	627x2,085x268	627x2,085x268
WEIGHT (kg)								
Shipping (crated)								
Without Electric Heater	39	40	50	66	66	79	87	92
With Electric Heater	40	41	51	68	68	81	89	95
Net (uncrated)								
Without Electric Heater	36	37	45	61	61	72	79	84
With Electric Heater	37	38	46	63	63	74	81	87

(*) Models with electric heaters have an alphabetic letter in the eight digit,i,e,F,B,H,J,K and L.

MCA-Minimum Circuit Ampacity; calculated as follows:125 % of heater R.L.Amps plus the fan motor R.L.Amps.

(**) The control valve is optional for vertical installation only.



Trane Thailand
7th Floor, Ploenchit Center Building
2 Sukhumvit Road, Klongtoey
Bangkok 10110

<http://www.trane.com>

An American Standard Company

Literature Order Number: UNT-SLB001-EN 0999

New

Stocking Location: Bangkok, Thailand

Since The Trane Company has a policy of continuous product improvement, it reserves the right to change design and specifications without notice.